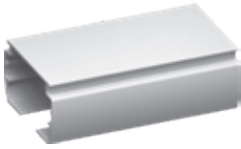
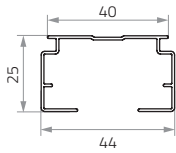


WAZ Vertical blind – manual operation

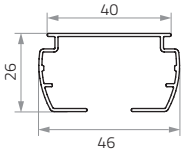
	Min.	Max.
Width	300 mm	5000 mm
Height	500 mm	4000 mm



A-2000 Rail



A-2006 Rail



COLOUR		white	silver anode	grey	anthracite	black
Cord operated vertical blind	A-2000	✓				
	A-2006	✓	✓			
Wand operated vertical blind		✓		✓	✓	✓

PLEASE NOTE:

- 1. Maximum recommended size of the blind is specified in the table.
- 2. Slight variations in the shade of slats made of fabric may occasionally occur.
- 3. The stack of 127 mm slats moved aside to one side takes up 9 cm/1 m of the blind's width + 7 cm distance from the control unit.
- 4. The stack of 89 mm slats moved aside to one side takes up 13 cm/1 m of the blind's width + 5 cm distance from the control unit
- 5. The final price of system "5" blind is the sum total of any two blinds of type "1" and/or type "2".



B2 Top bracket (metal)

ADDITIONAL OPTIONS		
Name		Comments
Vertical blind with 89 mm wide slats trimmed to size from 127 mm original width		
Sloping vertical blind		available in A-2006 system only



A2 Wall bracket



the price of the sloping vertical blind:
width (base) x height (the blind's longest side)

