



	Manual				Mono-command				Motorized					
	MIN	MAX	M	m <sup>2</sup>	MIN	MAX	M	m <sup>2</sup>	MIN	MAX	M	m <sup>2</sup>		
<b>Wood</b>														
Cord (standard)	30	270	240	3,5	Crank	60	270	240	3,5	Motor 24 V DC	47	270	240	3,7
<b>Bamboo</b>														
Cord (standard)	30	240	240	3,5	Crank	60	240	240	3,5	Motor 24 V DC	47	240	240	3,7

**i** Price in the table includes blind with: straight wooden valance, brackets type A, lifting with cord, tilting with cord, ladder string. Below 44,9 cm of width control and cord (slat lifting) are always on the opposite sides of a head rail.

**X** Possibility to use non-drilling brackets - see "Additional accessories" section.



Side guidance



Blind equipped with a perlon coated steel wire. Option offered with surcharge.

Side valance



Side valance is a decorative element of the blind, covering not only the front but also the sides of the head rail. Side valance is wider than the head rail. In one sided version it is 1,3 cm wider; in two-sided version it is 2,6 cm wider. Option offered with surcharge.

Hold down bracket



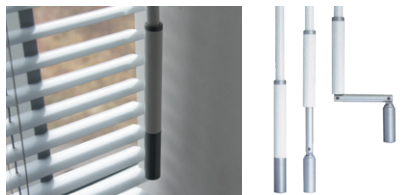
Hold down bracket allows locking the bottom rail, i.e. when installing on a tilting window. Option offered with surcharge. Other installation options - see additional accessories section.

Ladder tape



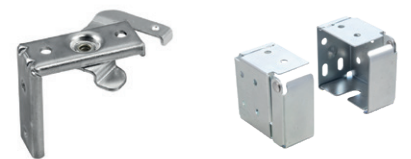
Standard ladder string is replaced by a standard ladder tape. Ladder width equals 16 mm. Option not available with crank or motor control. Option offered without surcharge.

Avantgarde crank



Clear and elegant crank handle with sliding sleeve concealing the pivoting mechanism. Available in white or black. Option offered with surcharge.

Head rail brackets



type A - universal (standard)

type B - side (colour)

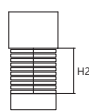
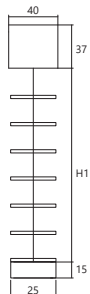
Hold down bracket



metal (colour)

clear

System dimensions

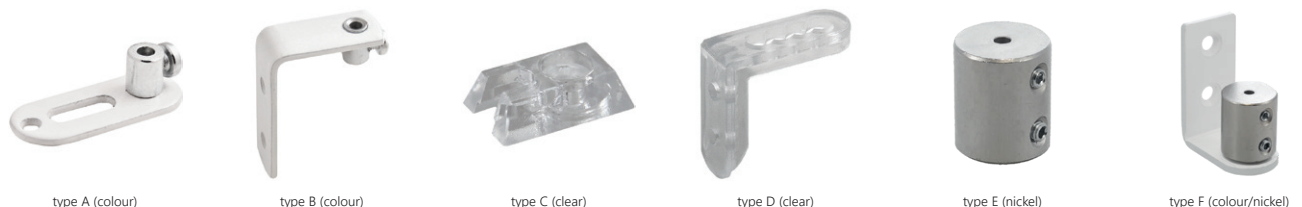


H1 - approximate height of a closed blind  
 H2 - approximate height of an opened blind

Wood  
 H2 = 10,0 cm per 1 m of height for ladder string  
 H2 = 13,0 cm per 1 m of height for ladder tape

Bamboo  
 H2 = 7,1 cm per 1 m of height for ladder string  
 H2 = 8,9 cm per 1 m of height for ladder tape

Tension brackets



type A (colour)

type B (colour)

type C (clear)

type D (clear)

type E (nickel)

type F (colour/nickel)