



	Manual				Mono-command				Motorized					
	MIN	MAX	M O D E	m ²	MIN	MAX	M O D E	m ²	MIN	MAX	M O D E	m ²		
Cord (standard)	30	300	300	9,0	Crank	60	300	300	9,0	Motor 24 V DC	47	300	300	7,5
Wand	30	300	300	9,0										

i Price in the table includes blind with: brackets type A, ladder string, lifting with cord, tilting with cord. Below 44,9 cm of width wand and cord (slat lifting) are always on the opposite sides of a head rail.

X Possibility to use non-drilling brackets - see "Additional accessories" section.



Side guidance



Blind equipped with a perlon coated steel wire. Option offered with surcharge.

Aluminium wand and tassel



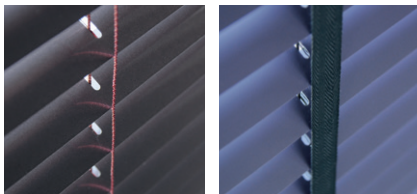
Decorative aluminium control components. Available in silver or bronze. Option offered with surcharge.

Avantgarde crank



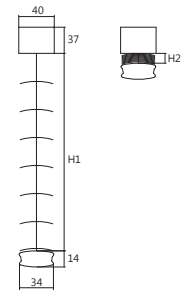
Clear and elegant crank handle with sliding sleeve concealing the pivoting mechanism. Available in white or black. Option offered with surcharge.

Ladder tape



Standard ladder string is replaced by a standard ladder tape. Ladder width equals 16 mm. Option not available with crank or motor control. Option offered without surcharge.

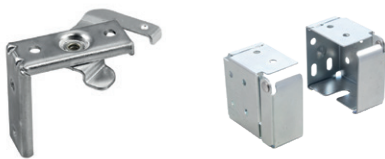
System dimensions



H1 - approximate height of a closed blind
H2 - approximate height of an opened blind

H2 = 2,5 cm per 1 m of height for ladder string
H2 = 4,5 cm per 1 m of height for ladder tape

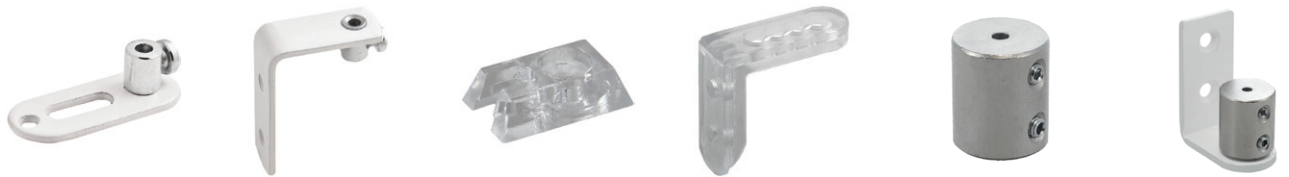
Head rail brackets



type A - universal (standard)

type B - side (colour)

Tension brackets



type A (colour)

type B (colour)

type C (clear)

type D (clear)

type E (nickel)

type F (colour/nickel)